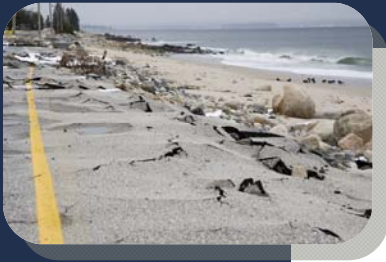


Projects



The VUEWorks Solution

Strategic Asset Management:

- Track depreciation and value
- Condition rating
- Prioritize consequences of failure
- Forecast capital budget needs
- Create & manage capital projects

Work Management:

- Document & track citizen issues
- Preventive maintenance scheduling
- Create & track work orders
- Manage time & expenses

Map & Data Sharing:

- Web browser based
- View maps & data
- Manage users
- Search & report
- Display & manage layers
- Link documents & data
- Manage non-GIS facilities

For construction cost estimation and budget analysis.

The VUEWorks® Projects module delivers capabilities to define projects, calculate estimated costs, group them for budgeting purposes and compare estimated costs with actual costs through integration with the Work Order module. New features allow you to assign job costs for an entire asset or a portion of it, and/or multiple point repairs along an asset. The Projects module allows you to group and summarize projects hierarchically by asset class, asset type, and jobs through a simple interface. Once you have one or more jobs defined, simply select the assets involved in the project, assign the jobs, and let VUEWorks do all the calculations and summaries.

Project Manager - Windows Internet Explorer
Filter is ON - Current list contains 25 out of 25 Projects

Form View | Table View | Filter | Reports | Assets

*Project Title: Pleasantview Terrace Corridor
*Project Group: FY 2009 Improvements
Location: Pleasantview Terrace
Status: Not Started
Estimated Start Date: 04/27/2009
Actual Start Date: 04/27/2009
Estimated End Date: 04/27/2009
Actual End Date: 04/27/2009
Estimated Duration: 04/27/2009
Actual Duration: 04/27/2009
Estimated Cost: \$1,450,765.10
Actual Cost: \$24.00
Cost Overrun: (\$1,450,741.10)

Estimated Costs | Actual Costs | Details

Group By: AssetClass, Job, Asset Type, Asset

Cost Source	Cost						
Assets	\$1,394,062.00						
Sanitary Sewer	\$469,862.00						
Reline Comprehensive	\$419,862.00						
Sanitary Pipe	\$419,862.00						
Asset ID	Location	Cost Class 1	Cost Class 2	Unit Cost	Quantity	Description	Cost
1	1056042	COLUMBIA STREET	VCP	6	\$150.00	51.68	\$7,752.00
2	1056043	COLUMBIA STREET	VCP	6	\$150.00	165.24	\$24,786.00
3	1055820	HOLLIS STREET	VCP	10	\$150.00	219.59	\$32,938.50
4	1055838	HOLLIS STREET	VCP	10	\$150.00	227.92	\$34,188.00
5	1056039	HOLLIS STREET	VCP	12	\$150.00	184.75	\$27,712.50
6	1056100	IRVING STREET	VCP	10	\$150.00	117.38	\$17,607.00
7	1056058	IRVING STREET	VCP	10	\$150.00	226.59	\$33,988.50
8	1056059	IRVING STREET	VCP	10	\$150.00	226.25	\$33,937.50

Buttons: Add, Save Layout, Save, Delete, New, New Copy, Print..., Close

Rec 17 of 25 | Local intranet | 100%

Estimate construction costs for a sewer replacement project.

Features and Benefits

- Include any asset classes and types within the same project – great for corridor projects involving multiple asset classes such as sewer, storm, water, pavement, sidewalks and more
- Create a library of comprehensive and point repair job types
- Allow multiple jobs to be performed on any asset
- Configure your own status terms to display; 'Pending', 'On Hold', 'In Progress', 'Completed', 'Backlogged', etc.
- Allow adjustment of a project cost by forecasting inflation rates