

Facilities



For pump stations, treatment plants, vehicle fleets, and buildings.

The VUEWorks® Facilities module provides access to physical assets not typically found in a GIS, but which still need historical service/work records, data links, condition assessment, valuation, the scheduling of preventive maintenance and the attachment of operational documentation. The type of facilities that can be managed is virtually limitless but some of the most common uses are: Pumps, Motors, Chemical Feeders, Public Works/Rescue Vehicles, HVAC and Structural Building Components.

The VUEWorks Solution

Strategic Asset Management:

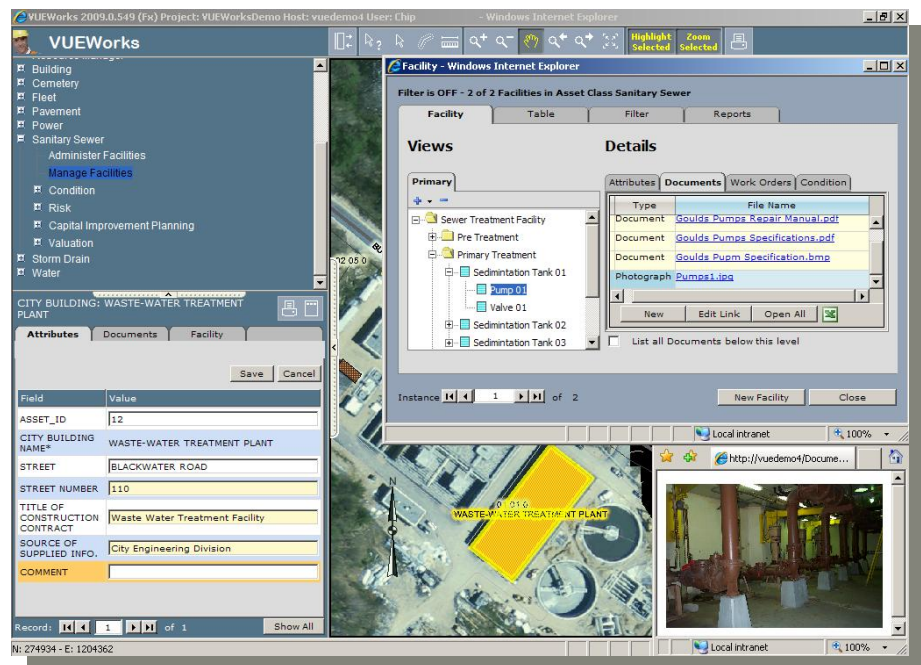
- Track depreciation and value
- Condition rating
- Prioritize consequences of failure
- Forecast capital budget needs
- Create & manage capital projects

Work Management:

- Document & track citizen issues
- Preventive maintenance scheduling
- Create & track work orders
- Manage time & expenses

Map & Data Sharing:

- Web browser based
- View maps & data
- Manage users
- Search & report
- Display & manage layers
- Link documents & data
- Manage non-GIS facilities



Operational documents, asset attributes, work order history and condition assessment information can all be retrieved anytime and anywhere with VUEWorks.

Features and Benefits

- Create and organize assets in a hierarchical structure for easy reference
- Link facilities to GIS assets for easy selection from the map
- Link equipment in the Resource Manager module and use them on work orders
- Structure your asset hierarchy to include values for condition, valuation and more
- Manage facilities with trigger work orders based on equipment run-time or other data i.e. SCADA Systems (Supervisory Control And Data Acquisition)

Facilities



For pump stations, treatment plants, vehicle fleets, and buildings.

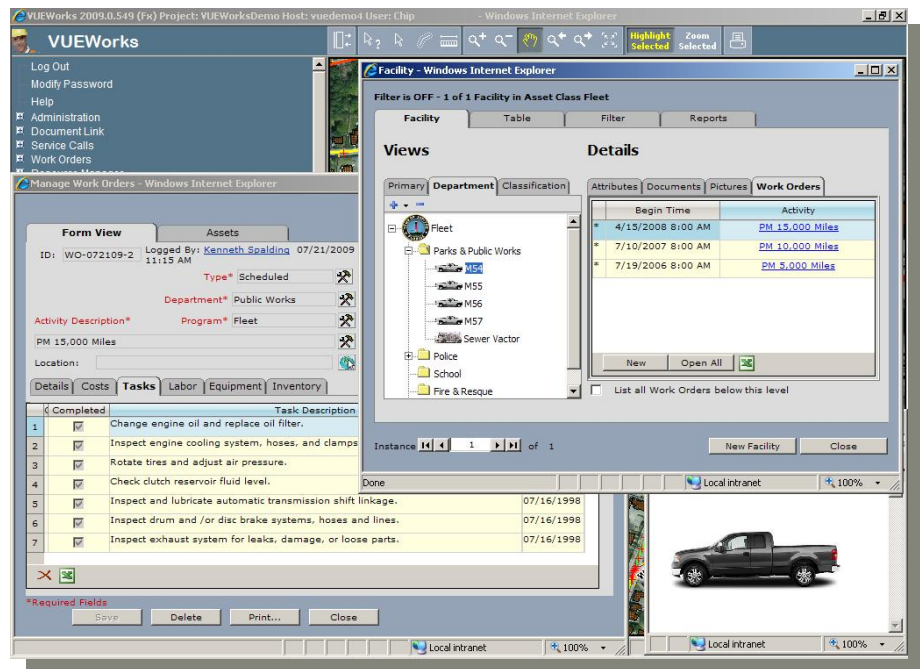
The VUEWorks Facilities module is exceptionally configurable, allowing the modeling of facilities as they are arranged. Create a hierarchy that begins at the Plant or Campus level and take it down as many levels as necessary, all the way to individual assets (pumps, motors, valves, switches, controls, etc.).

Apply VUEWorks features to see how the assets are summarized at each level within the hierarchy (value, condition, work history, etc.). When facilities are connected to a GIS map, drilling down to a desired level is as easy as clicking on a building. The "Multi-view" features allows for the creation of multiple hierarchical views of a facility so assets can be located according to a system view or a location (floor level) view.

The data linking features found in Facilities, combined with the Work Order module, allow automatic work orders to be issued based on user defined thresholds and real time information from a SCADA system.

"The Facilities module allows us to easily enter and access information that is not in our GIS data. This module allows other departments without a robust GIS dataset to use VUEWorks as an asset management solution."

– Tyler Erickson,
City of Burnsville, MN



VUEWorks is easily configurable to show different views of your physical asset inventory (i.e. Manufacture or Department) in an easy to navigate file hierarchy.

VUEWorks, Inc.
10 Ferry St., #434
Concord, NH
03301 USA
(p) 877.636.6413 or
603.228.8100
info@vueworks.com
www.vueworks.com

Contact us today for more information and to schedule a demonstration.