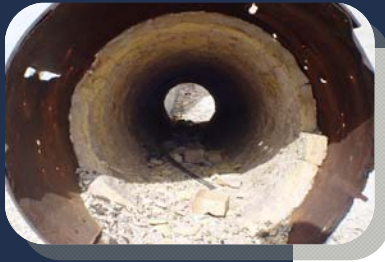


# Condition

# VUEWorks®

Integrated GIS Asset & Work Management Solutions



## The VUEWorks Solution

### Strategic Asset Management:

- Track depreciation and value
- Condition rating
- Prioritize consequences of failure
- Forecast capital budget needs
- Create & manage capital projects

### Work Management:

- Document & track citizen issues
- Preventive maintenance scheduling
- Create & track work orders
- Manage time & expenses

### Map & Data Sharing:

- Web browser based
- View maps & data
- Manage users
- Search & report
- Display & manage layers
- Link documents & data
- Manage non-GIS facilities

## For Condition tracking and reporting on any physical asset.

The VUEWorks® Condition module is highly configurable allowing you to collect, summarize, analyze, rate, and report on the condition of assets. Develop your own condition inspection criteria or use condition data collected with the use of other software. Either way, VUEWorks provides configurable tools that allow you to build your own rating criteria for prioritizing work. History features show how condition has changed over time for each asset or the entire system. The Report Designer lets you design just about any style of report with data from all sources including GIS data and linked databases that contain condition assessment details.

The screenshot displays the VUEWorks 2.6.4995F interface. On the left, a sidebar shows asset details for 'Sewer Pipe: 1051940', including a 'Probability of Failure' of 99%, 'Utility Condition Index' of 0, and 'Structural Condition Index' of 0. Below this is a table of 'Structural Defects' with columns for defect type, a visual progress indicator, and a numerical value. The table lists defects like 'Pipe Fractures/Cracks', 'Pipe Break', 'Pipe Deformation', etc. The main window shows a map of a residential area with a sewer pipe highlighted. Overlaid on the map is a 'Criteria' panel for 'Condition Assessment Settings for Sanitary Sewer'. This panel has tabs for 'Criteria', 'Categories', 'Simple Rating', 'Itemized Rating', 'Defect Rating', and 'Calculate'. The 'Criteria' tab is active, showing a table with columns for 'Criteria Name', 'Method', and 'Asset Type'. Below this, there are sections for 'Defect Rating Category' and 'Defects to be rated', which include a list of structural defects like 'Pipe Fractures/ Cracks', 'Pipe Break', 'Pipe Deformation', etc.

Sewer pipe condition assessment.

## Features and Benefits

- Can be used for condition assessment on pavement, sewer pipes, signs, buildings and other infrastructure assets
- Link to external condition data (such as PACP or WRC) to summarize, analyze, rate, and report using the VUEWorks interface
- Integrates with GIS so you can easily visualize the color-coded condition just by viewing the map
- Integrates with Work Orders module to allow you to capture condition data directly on a work order form